

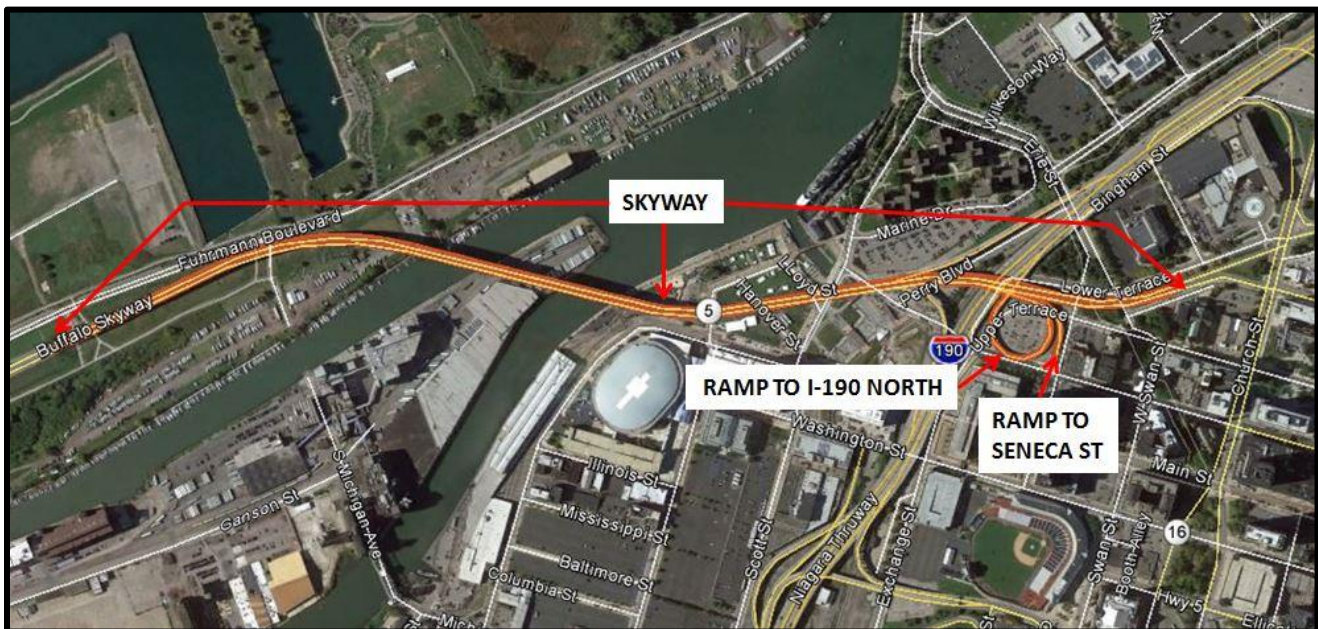
# PUBLIC INFORMATION MEETING

## **Bridge Rehabilitation Project** Project Identification Number 5134.45 **NY Route 5 – Buffalo Skyway** **I-190 North Ramp, Pearl Street Ramp**

**Wednesday, April 18, 2018**  
**4:00 p.m. to 7:00 p.m.**

**Gateway Building**  
**3556 Lakeshore Boulevard**  
**Blasdell, NY 14219**

### PROJECT LOCATION MAP



**Department of  
Transportation**

ANDREW M. CUOMO  
Governor

PAUL A. KARAS  
Acting Commissioner

# SKYWAY DECK REHABILITATION

## MEETING OBJECTIVES

- Provide the public with information regarding the impact on traffic movements during project construction.
- Seek input on the proposed Work Zone Traffic Control Plan.

## PROJECT OBJECTIVES

- Improve the deck condition using cost effective rehabilitation strategies.
- Address other miscellaneous repairs as necessary.

## ANTICIPATED PROJECT SCHEDULE, COSTS AND FUNDING

- Construction Begins: March 2018
- Construction Ends: June 2020

Currently, this project is funded with a combination of federal and state funds. The low bid amount was \$29 M and the low bid contractor is Cold Spring Construction Company.

## WORK ZONE TRAFFIC CONTROL PLAN

The proposed Work Zone Traffic Control Plan is designed to cause minimum disruption to the traffic with the following elements:

- The project will be built using phased construction in order to have the ability to keep a portion of the Skyway open to traffic throughout the duration of the project.
- Peak traffic in the inbound and outbound directions will be accommodated on the open portion of the Skyway by using cross-overs and alternating the direction of traffic.
- Detours will be established for inbound and outbound traffic and for traffic diverted by closure of ramps.

## PUBLIC OUTREACH

The travelling public will be kept informed before the project and throughout the construction of the project regarding upcoming closures, detours, alternative highway routes with the use of:

- Press Releases
- Advance Warning Variable Message Signs
- NYSDOT Website
- Social Media

# SKYWAY DECK REHABILITATION

## Work Zone Traffic Control Plan Stage 1

**The inbound Skyway will be closed for construction with alternating traffic utilizing the outbound Skyway.**

**The Skyway will be closed in both directions from 3 a.m. to 5 a.m. and 11 a.m. to noon on weekdays (Monday-Friday) to accomplish the switch in traffic direction.**

**A: Monday through Friday from 5 a.m. to 11 a.m.**

**Inbound traffic headed into the city will use the two open outbound lanes on the Skyway:**

Inbound traffic headed to I-190 will exit at Church Street and access I-190 northbound /southbound from the Church Street entrance ramps.

Inbound traffic headed to Seneca Street will be detoured via Church Street, to Pearl Street then to Seneca Street.

**Outbound traffic will be detoured:**

Outbound traffic from the city will use I-190 southbound entering at the Church Street ramp and exiting at the Louisiana Street ramp, then proceeding along Louisiana Street to Ohio Street to Fuhrmann Boulevard and back on to westbound NY Route 5 via Tiff Street on ramp (See Figure 1).

Traffic on I-190 southbound headed to outbound Skyway will continue to proceed on I-190 southbound and exit at the Louisiana Street ramp, then proceed along Louisiana Street to Ohio Street to Fuhrmann Boulevard and back on to westbound NY Route 5 via Tiff Street on ramp (See Figure 1).

Traffic headed to Outer Harbor Drive will utilize the detour along Ohio Street to Fuhrmann Boulevard.

**B: Monday through Thursday from noon to 3 a.m. (next day) and Friday noon to Monday 3 a.m.**

**Outbound traffic will use the two open outbound lanes on the Skyway:**

I-190 southbound ramp to the Skyway will remain open.

**Inbound traffic will be detoured:**

Traffic headed into the city will be diverted to Ohio Street, then proceed to Louisiana Street to South Park Avenue to Hamburg Street and then use I-190 northbound to Church Street Exit (See Figure 2).

Inbound traffic headed toward I-190 South will be diverted to Ohio Street, then proceed to Louisiana Street to I-190 southbound (See Figure 2).

Inbound traffic headed toward I-190 northbound will be diverted to Ohio Street, then proceed to Louisiana Street to South Park Avenue to Hamburg Street to I-190 northbound (See Figure 2).

Traffic from the Outer Harbor will follow the detour via Ohio Street to Church Street.

# SKYWAY DECK REHABILITATION

## Work Zone Traffic Control Plan Stage 2

**The outbound Skyway will be closed for construction with alternating traffic utilizing the inbound portion of the Skyway.**

**The Skyway will be closed in both directions from 3 a.m. to 5 a.m. and 11 a.m. to noon on weekdays (Monday-Friday) to accomplish the switch in traffic direction**

**A: Monday through Friday from 5 a.m. to 11 a.m.**

**Inbound traffic will use the two open inbound lanes on the Skyway:**

Ramps to I-190 northbound and southbound and the ramp to Pearl Street will remain open.

**Outbound Traffic will be detoured:**

Outbound traffic from the city will use I-190 southbound entering at the Church Street ramp and exiting at the Louisiana Street ramp, then proceeding along Louisiana Street to Ohio Street to Fuhrmann Boulevard and back on to westbound NY Route 5 via Tiff Street on ramp (See Figure 3).

Traffic on I-190 South headed to outbound Skyway will continue to proceed on I-190 southbound and exit at the Louisiana Street ramp, then proceed along Louisiana Street to Ohio Street to Fuhrmann Boulevard and back on to westbound NY Route 5 via Tiff Street on ramp (See Figure 3).

**B: Monday through Thursday from noon to 3 a.m. (next day) and Friday noon to Monday 3 a.m.**

**Outbound traffic from the city will use the two open inbound lanes on the Skyway:**

Traffic on I-190 southbound headed to outbound Skyway will continue to proceed on I-190 southbound and exit at the Louisiana Street ramp, then proceed along Louisiana Street to Ohio Street to Fuhrmann Boulevard and back on to westbound NY Route 5 via Tiff Street on ramp.

**Inbound traffic will be detoured:**

Traffic headed into the city will be diverted to Ohio Street, then proceed to Louisiana Street to South Park Avenue to Hamburg Street and then use I-190 northbound to Church Street Exit.

Inbound traffic headed toward I-190 southbound will be diverted to Ohio Street then proceed to Louisiana Street to I-190 southbound (See Figure 4).

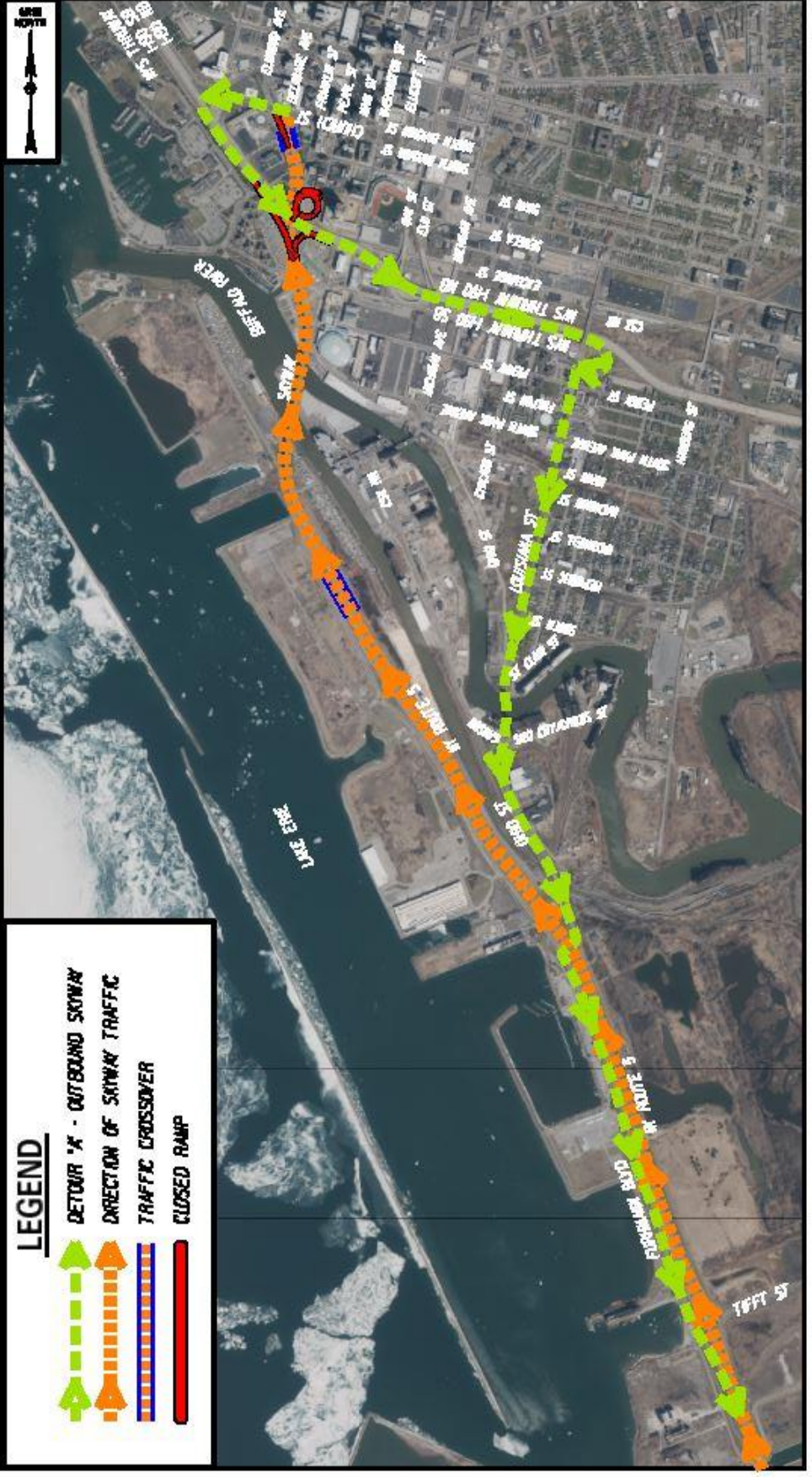
Inbound traffic headed toward I-190 northbound will be diverted to Ohio Street, then proceed to Louisiana Street to South Park Avenue to Hamburg Street to I-190 northbound (See Figure 4).

Traffic from the Outer Harbor will follow the detour via Ohio Street to Church Street.

# NY ROUTE 5 - SKYWAY BRIDGE DECK REHABILITATION - FIGURE 1

INBOUND SKYWAY UNDER CONSTRUCTION  
 INBOUND TRAFFIC UTILIZING THE TWO OUTBOUND LANES OF THE SKYWAY  
 OUTBOUND TRAFFIC IS DETOURED

MONDAY THROUGH FRIDAY FROM 5 AM TO 11 AM



# NY ROUTE 5 - SKYWAY BRIDGE DECK REHABILITATION - FIGURE 2

INBOUND SKYWAY UNDER CONSTRUCTION  
 OUTBOUND TRAFFIC UTILIZING THE TWO OUTBOUND LANES OF THE SKYWAY  
 INBOUND TRAFFIC IS DETOURED

MONDAY THROUGH THURSDAY, 12 NOON TO 3 AM (NEXT DAY) & FRIDAY 12 NOON TO MONDAY 3 AM



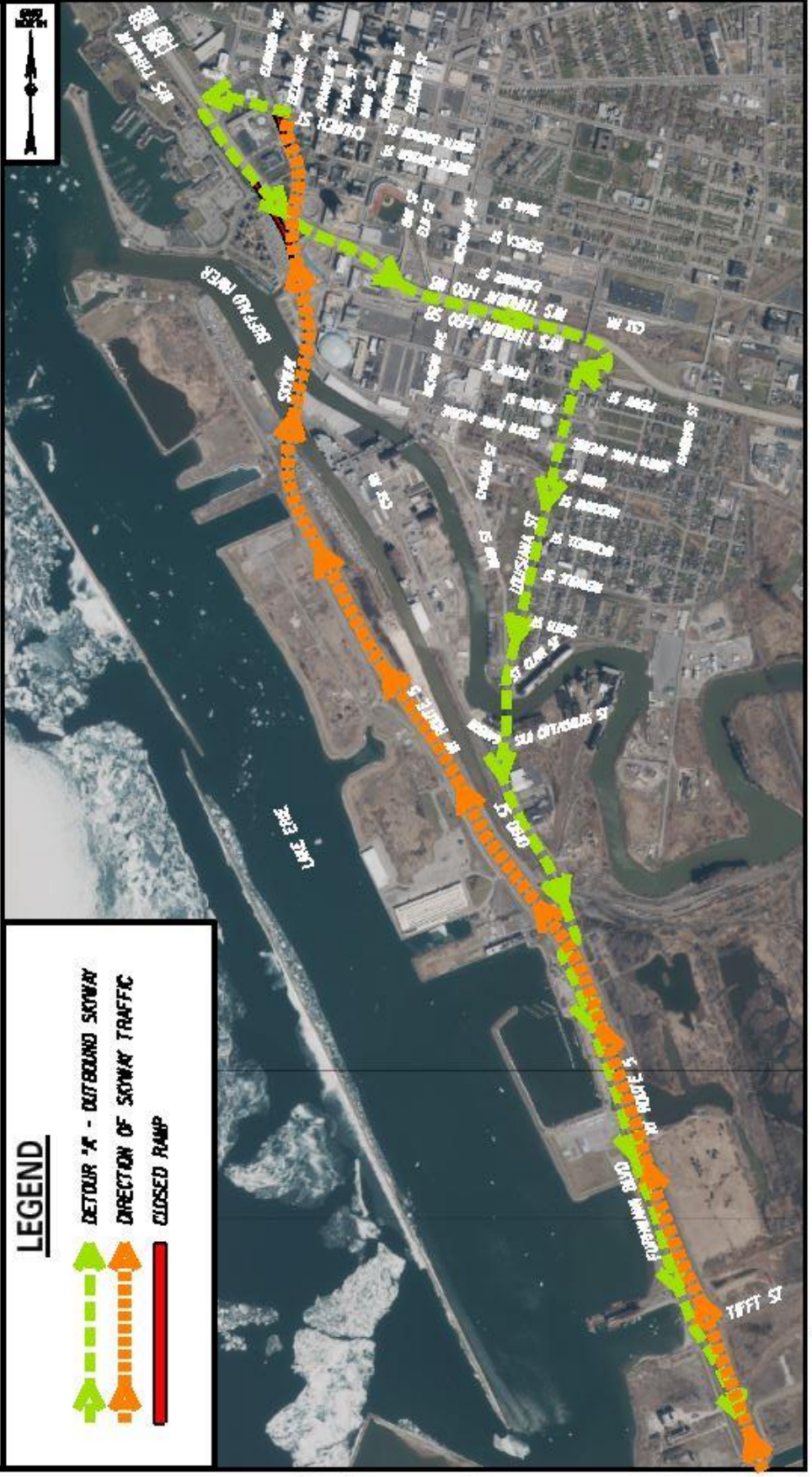
## LEGEND

-  DETOUR 'B' - INBOUND SKYWAY
-  DIRECTION OF SKYWAY TRAFFIC
-  CLOSED RAMP

# NY ROUTE 5 - SKYWAY BRIDGE DECK REHABILITATION - FIGURE 3

OUTBOUND SKYWAY UNDER CONSTRUCTION  
 INBOUND TRAFFIC UTILIZING THE TWO INBOUND LANES OF THE SKYWAY  
 OUTBOUND TRAFFIC IS DETOURED

MONDAY THROUGH FRIDAY FROM 5 AM TO 11 AM



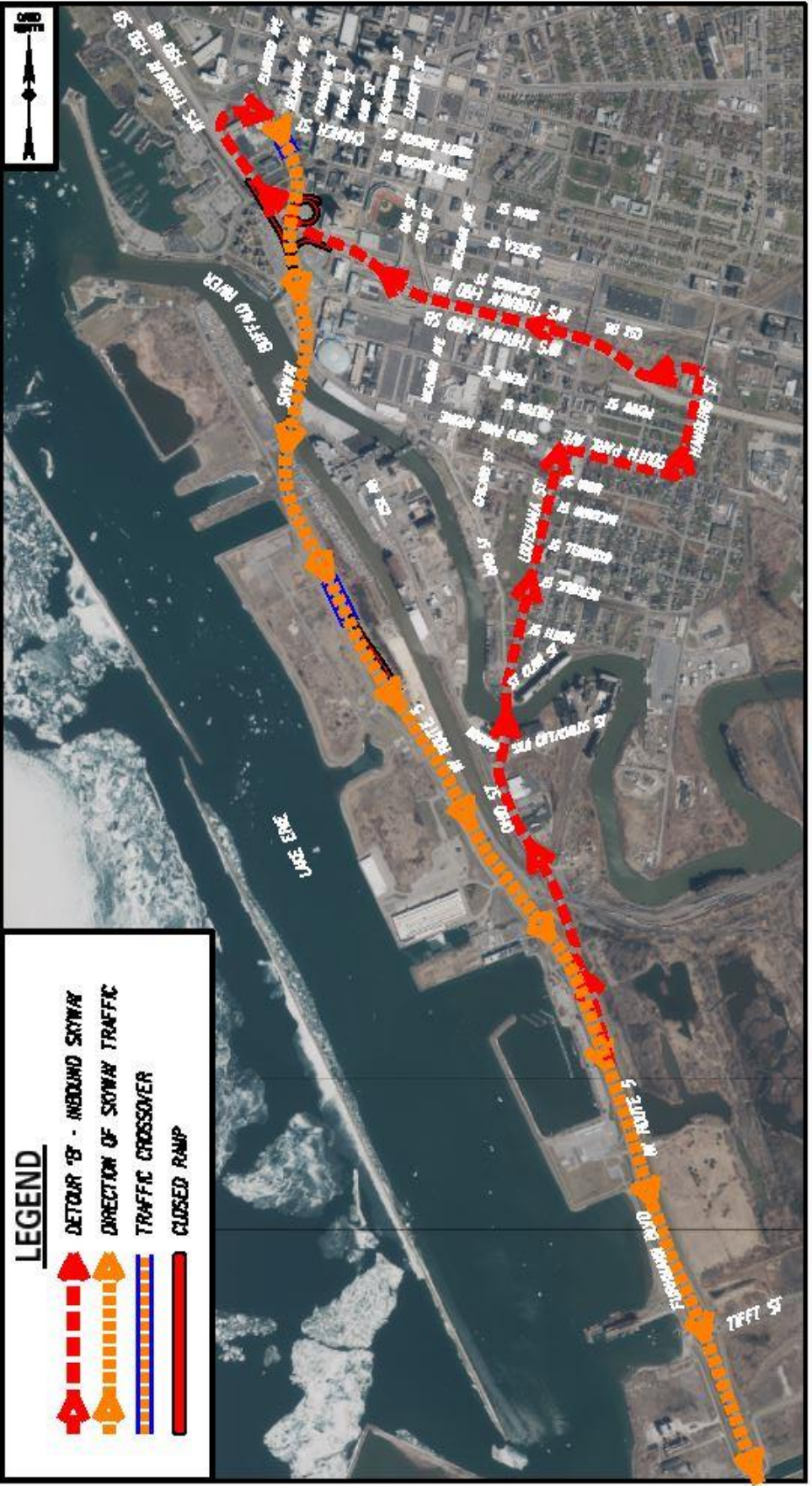
Department of Transportation

P.I.N. 5134.45  
 ROUTE 5 - SKYWAY BRIDGE DECK REHABILITATION

# NY ROUTE 5 - SKYWAY BRIDGE DECK REHABILITATION - FIGURE 4

OUTBOUND SKYWAY UNDER CONSTRUCTION  
 OUTBOUND TRAFFIC UTILIZING THE TWO INBOUND LANES OF THE SKYWAY  
 INBOUND TRAFFIC IS DETOURED

MONDAY THROUGH THURSDAY, 12 NOON TO 3 AM (NEXT DAY) & FRIDAY 12 NOON TO MONDAY 3 AM



Department of Transportation